

CARVEWRIGHT™

WOODWORKING SYSTEM

PROJECT INSTRUCTIONS

Baby Blocks - Boy



**BASIC
PROJECT
LEVEL 2**

This simple project is a delightful gift displaying the name and birth-day of you or your loved ones baby. It will utilize only standard functions and bits available with the machine.

Be sure to fully read and understand your CarveWright Manual before beginning this or any project.

This project is designed with specific settings in your software. Aside from the insertion of the baby's name and birth date, **DO NOT alter or change the pattern/project in any way.**



*Please read **ALL** of the following instructions before starting this project.*

Materials List

- 1. The Project File: (included)**
BabyBlocks_Boy.mpc
- 2. Boards with the following dimensions**
3/4"x7.5"x20"
(this project requires only one board)
- 3. Small picture hanging brackets.**

Optional suggested items...

- A Dremel-type rotary tool with an assortment of abrasive bits, and 3M sanding wheels for minor touch-up and
- a 6" 120 grit sanding mop for quick polishing of surface.
- A 1/4 inch straight edge chisel



Baby Blocks - Boy

STEP 1

Start your designer software and open the file entitled BabyBlocks_Boy.mpc.

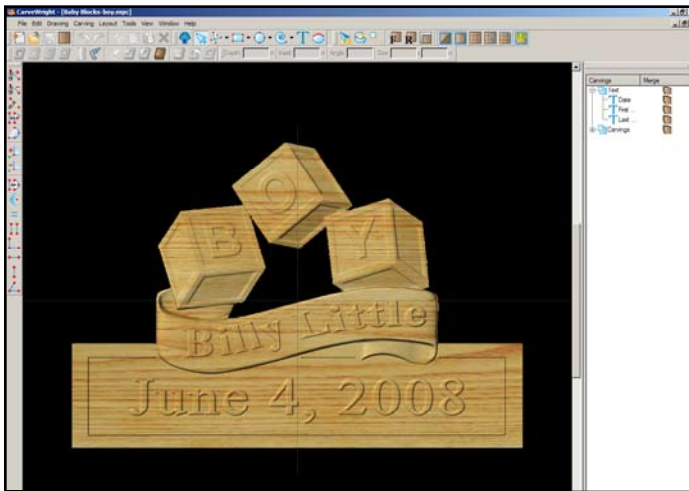


fig. 1

STEP 2

On the top menu bar select “View” which will drop down a menu. At the bottom of this menu is the “Carving List”. Select “Carving List” which will open a list of the elements in the project. Insert the baby’s first name by selecting “First Name” from the carving list tool bar. Right-click and select “Text Tool”. This will make the text tool box appear. Type the first name of your subject. Repeat these steps for the “Last Name” and “Date”.

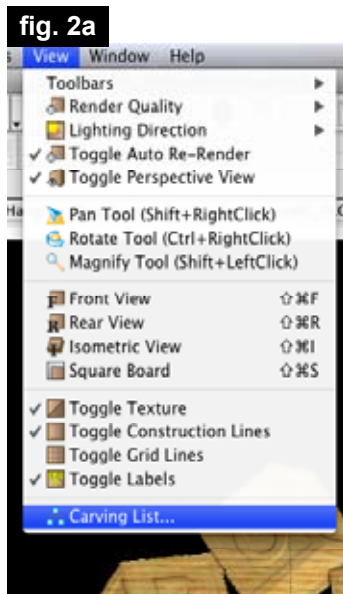


fig. 2a

When you are finished here, click File> Upload. When the “Auto-Jig” pop-up window appears, choose **IGNORE**. You will not need to jig for this project.

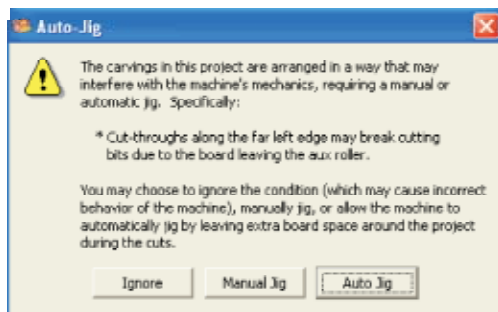


fig. 2b

STEP 3

Load your board into the machine. On the Carve-Wright keypad, press 1 for “Project Menu” Select “Baby Blocks-boy”, press **ENTER**.

- Stay Under Rollers – **press 1) Yes**
- How to Place On Length – **press 1) Center on Length**
- Cut Board to Size – **press) 2 No**
When loading bits into the quick change, it is always good to give it a wiggle to make sure there is no play in the bit.
- Select Vector Bit – 1/16 CARVING – **press ENTER**
The machine move to the center for you to insert the bit. Press ENTER again and it will find the tip of the bit and then find the surface of the board.
- Load 1/8 CUTTING Bit – **press ENTER**
Replace the bit with the cutting bit and it will again find the bit.
- Select Carving Bit – 1/16 CARVING - **press ENTER**
Repeat the above steps to insert the bit. This is the last bit so after the machine finds this bit it will begin carving.

STEP 4

When your project is finished cutting out, carefully cut the tabs with a chisel to remove your project.



fig. 4

STEP 5

All you have to do now is clean up your piece. A rotary hand tool with abrasive bits will make this task a snap. We also find a 6”, 120 grit mop sander invaluable in quickly polishing the surface. Stain or paint it to your liking. Attach a small picture hanging bracket to the back, and this baby is ready for delivery!



fig. 5

