



CARVEWRIGHT™

WOODWORKING SYSTEM

PROJECT
BASIC
DIFFICULTY

PROJECT TUTORIAL

Cascading Holiday Placards

Designed for CarveWright™ by Michael Tyler - www.carvebuddy.com



Easily customize your Cascading Holiday Placard for any occasion! A Thanksgiving Turkey and Christmas Angel placard are included to get you started. The project uses just the two bits that came with your machine. No other bits are required. The finished project dimensions are about $\frac{3}{4}$ " x 9" x 13" .



Main items you will need:

1) The Project Files (included):

- Holiday_Placard_Top-Bottom.mpc
- Thanksgiving-Christmas_Placards.mpc
- Blank_Customizable_Placards.mpc (for creating custom placards, if desired)

2) Boards with the following dimensions:

Top/Bottom: $\frac{3}{4}$ " x 5.5" x 24"
Placards: $\frac{1}{2}$ " x 5.5" x 24"

NOTE: Do not use boards that are shorter in length than specified above.

3) Small hooks and screw eyes, sea sponge

4) Sandpaper, wood stain and/or paint and clear finish

5) A Dremel-type rotary tool with assorted sanding wheels and bits to sand small details and speed up preparation for finishing.

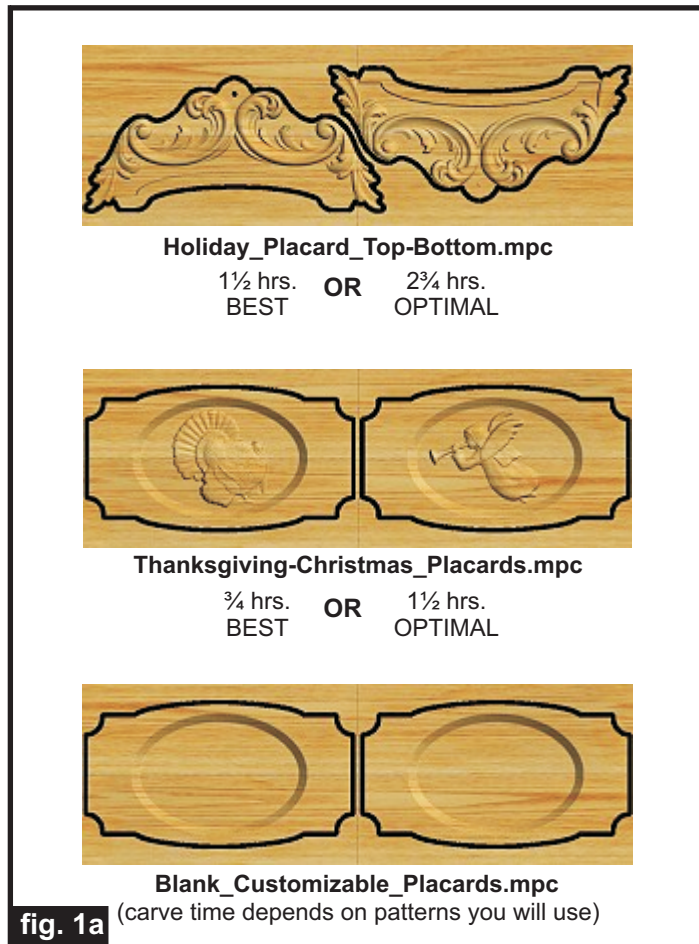


Cascading Holiday Placards

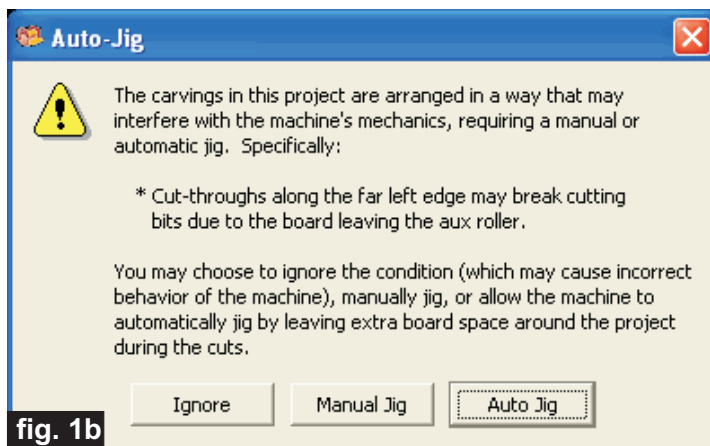
(cont.)

STEP 1

Start your Designer software and open the .mpc files. (Fig. 1a)



All you need to do at this point is upload the project files to your memory card. (File/Upload). When you upload, you may or may not get a pop-up window with an “Auto-Jig” warning message (Fig. 1b)



If you do see the message, you may safely click on “Ignore” because our actual boards will be large enough that it won’t cause any problems at all. After each project is compiled, select “Best” or “Optimal” for the File Quality setting. (I recommend “Optimal”.) Click “OK” and upload each mpc project file to your memory card. Insert the card into your machine and load a board that measures the appropriate dimension specified for each particular mpc (see page 1 for board dimensions). Turn on your machine and proceed with the standard project setup in Step 2...

STEP 2

You will see “Project Menu” on your LCD display. Press “1” and scroll to the **Holiday_Placard_Top-Bottom.mpc** project, and press the green ENTER button to select it. Then follow the additional prompts....

- **Stay Under Rollers** - press 1) YES
- **DO NOT RESIZE or SCALE the projects!** If prompted, always keep the original size. No scaling!
- **How To Place** - press 1) Center
- **Cut Board to Size?** - press 2) NO
- **Select Drill Bit: 1/8 " Cutting** - Press ENTER. The machine will move the bit holder to the center of the machine in preparation for the bit installation.
- **Load Bit: 1/8 " Cutting** - Insert your 1/8" cutting bit, then press the green ENTER button. (homes, etc.)
- **Select Cutting Bit: 1/8 " Cutting** - Just press ENTER...the bit is already installed
- **Select Carving Bit: 1/16 " Carving** - Press the green ENTER button. (Moves to center of machine.)
- **Load Bit: 1/16 " Carving** - Remove the 1/8" cutting bit, and insert your 1/16" carving bit, then press the green ENTER button. After homing and finding surface, the machine will begin the carving process.
- **After it is done carving, you will be prompted to load your 1/8 " cutting bit.** Take out the 1/16" carving bit, then insert your 1/8" cutting bit, remove excess sawdust debris from the machine, then press the green ENTER button.

Cascading Holiday Placards

(cont.)

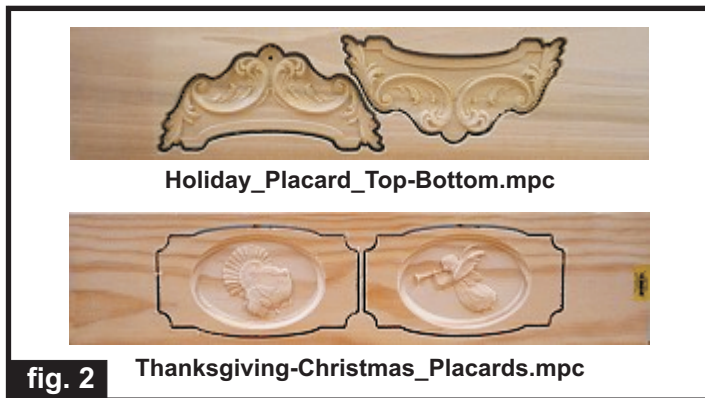
STEP 2 (cont.)

• The machine will now proceed to perform the drill and cutouts as it moves around the component outlines. It leaves little tabs to hold the part in the board. When the machine is finished, remove your board and clean your machine of excess sawdust.

• Repeat the entire procedure for the remaining mpc files (you will NOT be prompted for a Drill bit).

You can customize the Blank_Customizable_Placards.mpc, by placing a suitable pattern in the oval recess and adjusting depth, if required. The placards are cut from ½" material, so I don't recommend going any deeper than ¼" .

Your boards will look something like this (fig. 2)

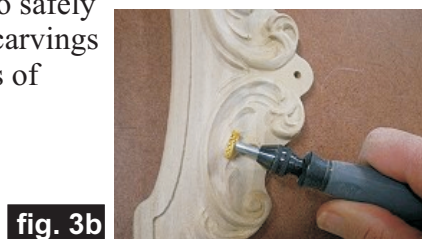


STEP 3

Separate all the pieces from the boards with a utility knife or hobby saw. (fig. 3a)



Use a Dremel-type tool and bits to sand off the tabs and to remove any fuzzies and undesirable tool marks. I also use 3M Radial Bristle Discs from www.mcmaster.com to safely remove fuzzies from carvings without excessive loss of detail. (fig. 3b)



STEP 4 - Apply Finish

Apply stain/paint and clearcoat of your choice. Here's what I used on my Cascading Holiday Placards made from Poplar and Select Pine:

- Three coats of thinned Bullseye Sealcoat (2 parts sealer/3 parts Denatured alcohol)
- Sanded between coats
- Two coats full-strength Bullseye Sealcoat
- Applied Krylon Fusion spray paint #2533 Hammered Copper color

Apply "Antique Patina" (optional)

- Brush on thinned Burnt Sienna waterbased craft paint
- Immediately wipe off excess with paper towels and dry brush, then dab lightly with a piece of sea sponge for an "uneven" aged effect (fig. 4a, 4b)
- Lightly burnish high-points of carvings with cloth rag or paper towels
- Brush on thinned light/pale green, wipe off excess, etc., and burnish as before (4c, 4d)
- Apply clearcoat if desired



Cascading Holiday Placards

(cont.)

STEP 5 - Final Assembly

Make pilot holes in the center of the thickness of the material with a sharp awl. Position the holes about 3/8" in from the outer edges of top, bottom and placard ends for the screw eyes and hooks. (fig. 5a)



fig. 5a

Screw in the hooks on the top and bottom, then screw in the screw eyes on the placards. (fig. 5b)



fig. 5b

Finally, hang your choice of placard between the decorative top and bottom components. (fig. 5c, 5d)

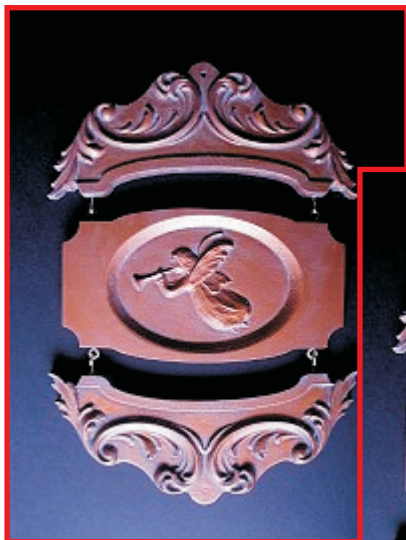


fig. 5c



fig. 5d

IN CONCLUSION

I hope you enjoy incorporating your own designs for your placards. Make a placard for each season and/or holiday using any suitable pattern. It's a unique and classy way to 'announce' any special occasion too (new baby, anniversary, birthday, graduation). Another idea is to hang several placards with the oval cut out to make a "frame" to display family photos (that idea came from Connie at CarveWright - thanks, Connie!)

Happy Carving!

Michael



Materials Source Page

- **3M Radial Bristle Discs** from www.mcmaster.com
(stack 3 discs at a time on your rotary tool mandrel)

80-grit: part # 4494A19

220-grit: part # 4494A18

(also available from <http://www.ottofrei.com>)



- **Assorted Acrylic Craft Paint** from Michael's Arts and Crafts™

Krylon Clear Gloss Acrylic
&
Hammered Copper Fusion Paint
from WalMart™



Miscellaneous Items Purchased at Lowes™

- **Bullseye Sealcoat**
- **Denatured Alcohol**
- **Disposable Brushes and Paint Rags**
- **Screw eyes and hooks**

Additional Resources

RESOURCES...

There are numerous resources for the CarveWright/CompuCarve owner to make their experience with these machines much more enjoyable.

Every owner should join the CarveWright User Forum (<http://forum.carviewright.com/forum.php>) where fellow users share their experiences and knowledge with these machines on a daily basis. It is a FREE service that you will surely appreciate. A handy Search Feature helps you find answers to any questions you may have.



The trademarks, service marks and logos (the "Trademarks") used and displayed here are registered and unregistered Trademarks of LHR and others.